

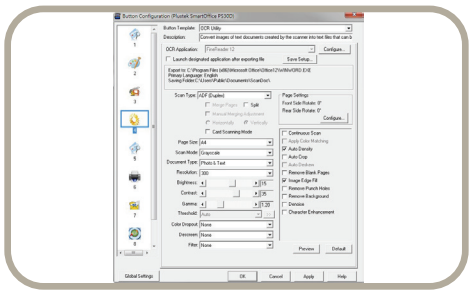
❖ SOFTWARE



Powered by
ABBYY®

ABBYY FineReader 12.0 Sprint

Industry standard TWAIN and WIA drivers combined with TIF, JPG, PDF and Microsoft Office file formats ensure compatibility with thousands of scanning and imaging programs. ABBYY FineReader Sprint is included to easily create and manage searchable PDFs at the touch of a button.



DocAction

Plustek DocAction

Button utility to simplify document scanning. DocAction enables you to specify your personalized scanning configuration settings and scan documents with the click of a button. Scanned documents are automatically sent directly to Printer, Email, Folder or FTP. DocAction also enables you to scan directly to many imaging and document management applications. DocAction saves scanned documents in all common imaging formats including JPEG, TIFF, and PDF.

Hardware Requirements

- Pentium IV 3.2 GHz processor
- CD-ROM Driver
- One available USB Port (USB 2.0 recommended)
- 1GB RAM or higher recommended
- 800 MB free HDD space (1 GB or larger recommended)



Specification

Image Sensor	CIS x 2
Light Source	LED
Optical Resolution	600 dpi
Hardware Resolution	600 x 600 dpi
Scan Modes	Color: Input 48-bit, Output 24-bit Grayscale: Input 16-bit, Output 8-bit Black & White: 1-bit
ADF Capacity	1. 50 sheets (A4/ Letter, 70 g/m ² or 18 Lbs), Max. thickness under 10 mm (0.4") 2. 25 sheets (A3, 70 g/m ² or 18 Lbs) Note: Maximum ADF capacity varies, depending upon paper weight.*
Scanning Speed (ADF)	20 ppm/ 40 ipm (Color, Grayscale, B&W mode, 300 dpi, A4 Landscape) 20 ppm/ 40 ipm (Color, Grayscale, B&W mode, 200 dpi, A4 Landscape) Note: Results may vary depending upon your scanning application, computer processor and system memory.
Scanning Area (W x L)	Max: 297 x 5080 mm (11.69" x 200") Min: 13.2 x 13.2 mm (0.52" x 0.52")
Acceptable Paper Sizes (W x L)	Max: 305 x 5080 mm (12" x 200") Min: 50.8 x 63.5 mm (2" x 2.5")
Acceptable Paper Weight (Thickness)	40 to 220 g/m ² (10 to 58 Lbs)
Daily Duty Scan (Sheets)	4,000
Action Button	4 Buttons: Up, Down, Scan, Standby 9 function keys: all customizable.
Power Supply	24 Vdc/ 2.7 A
Interface	USB 2.0
Net Weight	6.57 Kgs (14.48 Lbs)
Dimensions (W x D x H)	436 x 262 x 266 mm (17.16" x 10.31" x 10.47")
Protocol	TWAIN Compliant
OS	Windows XP / Vista / 7 / 8 / 10

Plustek T300



Suitable size and full function for office use



The Plustek T300 is a high practicality A3 sized document scanner that features 20ppm (40 ipm) scan speed in color grayscale and B/W mode and 4,000 page per day duty cycle. Industry standard TWAIN driver ensures compatibility with almost any document imaging application. These features help not only education but also other industry, such as the legal department.

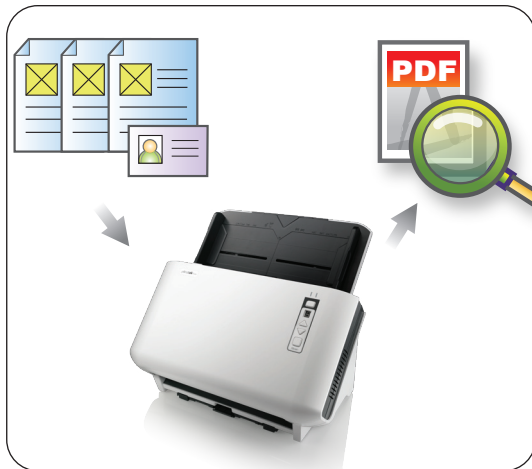
❖ KEY FEATURES

- **A3 size scanning area**
- **Easy-to-use single touch buttons, design for scan, OCR, PDF and Email**
- **20ppm (40 ipm) scan speed (Grayscale, 300 dpi, A4 Landscape)**
- **Scans documents up to 200" long**
- **Searchable PDF files format available**
- **Advanced image enhancement to automatically straighten and rotate pages, adjust brightness, detect color.**



High practically features and flexible to integrate

The Plustek T300 is suitable for integration purpose, for example, it can integrate with OMR and implement in the education. Or you can simply use our bundled software DocAction to configure your scan settings. See our website to see how we can help others.



Seachable PDF files format and TWAIN compliant available

The bundled software- ABBYY FineReader can help you do OCR to generate the searchable PDF. The Plustek T300 is not only help you digitalised your large format document, but also help you do the filling job and meet the future data search purpose. The Plustek T300 also allow you use TWAIN compliant to scan.

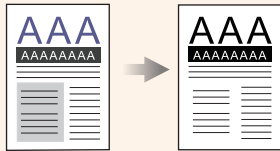


Easy-to-Use

Single-touch customizable button automates up to 9 frequent scanning jobs (e.g., Scan to PDF, Scan to file, email, network share, copy, etc.) The innovative automatic wake-up function turns the scanner on as soon as documents are placed in the feeder.

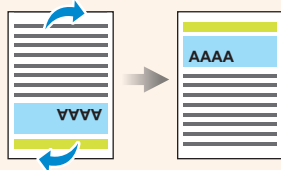
1 Auto Threshold

Automatically threshold the current image into a binary black and white image.



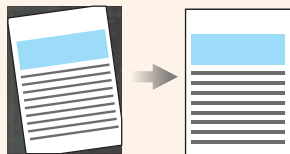
2 Auto Rotate

Automatically rotates document based on the contents of the document.



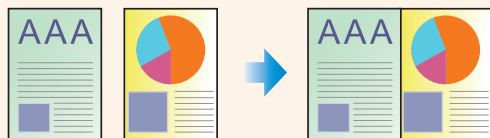
3 Auto Crop & Deskew

Automatically straightens and crops image to the documents actual size.



4 Merge Pages

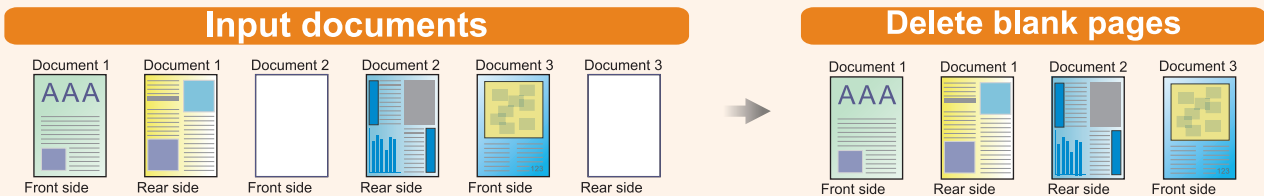
allows you to scan both sides of your folded document and merge them into one image.



5 Color Dropout Removes red, green or blue color when scanning forms.



6 Blank Page Removal Automatically removes blank pages without manual editing.



Supports document scanning up to A3 size.



Fast scanning at speeds up to 20ppm/40ipm in Grayscale, B/W and color mode with 200dpi or 300 dpi.



Digitize paper business cards into easily-managed and sorted contacts, and turn your business cards into information.



Save paper documents as searchable PDFs at the touch of a button and find your information faster.



Allows you to easily upload files or scanned images to the E-mail.



It can automatically crop your image or document according to your document edge.